

# A Rare Case of Primary Lymphoma of the Caecum Presenting as Intussusception

Leena Jayabackthan, Sandeep Babukumar Murgi<sup>1</sup>, Shane Graham, Reshma G Kini

Departments of Pathology, and <sup>1</sup>Radiodiagnosis, Father Muller Medical College, Mangalore, Karnataka, India

**Address for correspondence:** Dr. JB Leena, E-mail: drleenapriye@yahoo.co.in

## ABSTRACT

Mucosa associated lymphoid tissue (MALT) lymphomas are rare neoplasms. They are most common in the stomach followed by small intestine and colon. The symptoms are nonspecific and generally do not present with intussusception. Here we report a rare clinical entity in which a 35-year-old female presented to the emergency with severe abdominal pain which was sudden in onset. History revealed that she had been having vague mild abdominal pain for 2 years. Ultrasonography showed ileocolic intussusception with hypoechoic lesion of 54 × 46 mm seen at the lead point. Emergency laparotomy with the right hemi-colectomy was done. The specimen was sent for histopathological examination which revealed a diagnosis of MALT lymphoma. Awareness of the varied clinical presentation helps in formulating the appropriate therapeutic strategy.

**Key words:** Caecum, intussusception, primary lymphoma

## INTRODUCTION

The term MALT lymphoma was first described by Isaacson and Wright in 1983.<sup>[1]</sup> Primary gastrointestinal lymphoma is very rare, constituting only about 1-4% of all gastrointestinal malignancies.<sup>[2]</sup> Due to infrequent occurrence, there are only few reports of colonic MALT type lymphoma, and absence of sufficient data makes evaluation and management of these patients challenging.<sup>[3]</sup> Adult intussusception is uncommon and accounts for 5% of all intussusception and 1% of all bowel obstruction.<sup>[4]</sup> Mucosa-associated lymphoid tissue (MALT) and diffuse large B cell lymphomas (DLBCL) are the two histologic subtypes most commonly observed.<sup>[5]</sup> Prognosis is poor when compared to gastric lymphomas.<sup>[6]</sup> Here, we report a case of a MALT lymphoma of the colon in a female patient who presented with intussusception. The therapeutic

strategies of this rare entity are not well defined and require further research.

## CASE REPORT

A 35-year-old woman presented with a pain in the right iliac fossa of one month duration with a sudden increase in the severity of the pain. On examination, a tender mass was palpable in the right iliac fossa. Ultrasound and CT scan of the abdomen revealed a ileocolic intussusception with homogenous enhancing mass lesion approximately 5.6 × 5.3 × 3.5 cms seen at the lead point. The ileocecal junction, cecum and ascending colon pulled up by intussusceptum. Multiple mesenteric nodes were seen. The differential diagnosis offered were adenoma/lymphoma. A right hemicolectomy was done with an uneventful postoperative course.

On gross examination, a fleshy circumscribed polypoid mass was seen at the caecum measuring 5.5 × 4.5 × 3.5 cm, with the cut surface showing areas of hemorrhage [Figure 1].

Microscopy of the lesion with adjacent intestinal mucosa revealed necrosis of the mucosa. The lamina

Access this article online	
<b>Quick Response Code:</b> 	<b>Website:</b> <a href="http://www.jlponline.org">www.jlponline.org</a>
	<b>DOI:</b> 10.4103/0974-2727.119864

propria was infiltrated by a monotonous population of lymphoid cells that showed destruction of the glands and were seen extending into the muscularis propria and the serosa. The cells were small with irregular nuclear membrane, having hyperchromatic nucleus and scant cytoplasm. The tumor cells were characteristically arranged around the epithelium (lymphoepithelial lesion) [Figure 2]. Seventeen lymph nodes isolated showed reactive hyperplasia. A histological diagnosis of MALT lymphoma was offered. Immunohistochemistry was done which showed strong positivity of the tumor cells for CD-20 [Figure 3] and negative for CD 10, thus confirming the diagnosis. The patient was referred to oncology for chemotherapy.

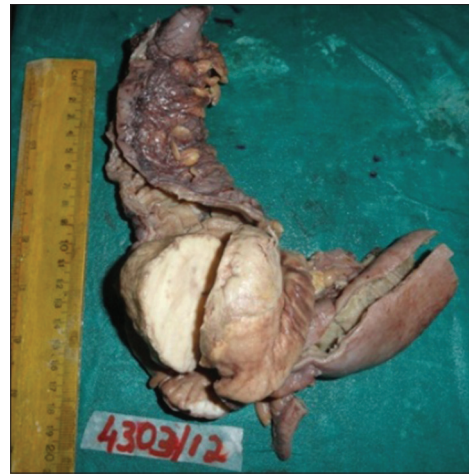
## DISCUSSION

MALT lymphoma is defined as an extranodal marginal zone B-cell lymphoma of MALT type. Common age of presentation is middle age and older adults with both sexes being equally affected. The most common site in the large intestine is the caecum, as in our case, and the rectum.<sup>[7]</sup> Reports of colonic intussusception in adults are less common in literature and are confined to both small and large bowel. Colonic intussusception presents in a subacute manner with prolonged abdominal pain and constipation.<sup>[8]</sup> The symptoms of MALT lymphoma are nonspecific mimicking colorectal cancer and hence the delay in the diagnosis up to the last stage. Primary intestinal lymphoma most commonly involves the ileocecal region, probably due to the high proportion of lymphoid tissue.<sup>[7]</sup>

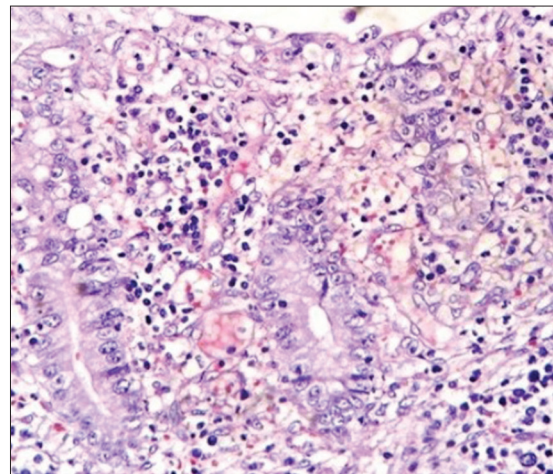
Because the ileocecal region includes the area from the distal ileum to the cecum, it is often difficult to designate the ileocecal region as part of the small or large intestine. Thus, the designation for this region differs among studies, as some considered it part of the small or large intestine.<sup>[9]</sup>

Our case was B-Cell lymphoma of the ileocecal region which presented as intussusception and had no regional lymph node involvement. Regional lymph nodes, if involved, are found to have a bad prognosis. The patient underwent surgery followed by chemotherapy with uneventful course during the three months follow-up period.

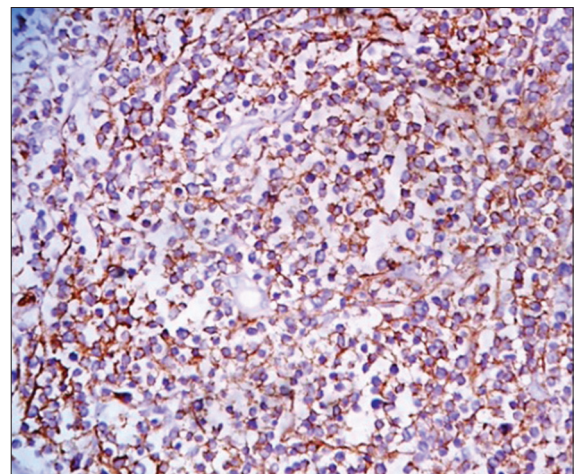
Immunohistochemical analysis can distinguish the MALT lymphoma from other low-grade lymphomas by detecting positivity for superficial immunoglobulins and pan B antigens – CD19, CD20, CD79 without expression of CD5, CD10, CD23 and cyclin D1.<sup>[10]</sup> Colorectal MALT lymphomas do not have the same association with *H. pylori* infection



**Figure 1:** Gross specimen: Polypoidal mass arising from the ileocecal region



**Figure 2:** Microscopy sections shows tumor cells infiltrating and surrounding the colonic epithelium. (H and E  $\times 40$ )



**Figure 3:** Immunohistochemistry staining positive for CD20

and are treated as a different clinical entity. In the absence of standardized treatment, various treatment methods have

been used which include surgery, chemotherapy, radiation and endoscopic resection. As a causative organism has not been identified, the role of antibiotics is controversial.<sup>[11]</sup>

Convincing evidence has been established showing the relationship between *H.pylori* and gastric MALT lymphoma, and therefore therapeutic strategy has been altered for the patients with gastric MALT lymphoma in the early stages.<sup>[12]</sup> In contrast, a therapy for colonic MALT lymphoma has not yet been established due to rarity of the disease and late presentation.

Conservative treatment is preferred to surgery in the localized gastric lymphomas, the same is not true for intestinal lymphomas because the surgery in combination with chemotherapy has proven superior to any other treatment combination. Thus, because of the divergent therapies reported in the various studies, there are as yet no clear therapeutic guidelines for the treatment of MALT lymphoma of the colon.<sup>[13]</sup> Surgical resection may be effective when a colorectal MALT lymphoma does not respond to the eradication therapy or chemotherapy and is localized without dissemination. The survival of the patients with ileocecal region involvement is better than that of the patients with involvement at other sites, which might be related to the histologic distribution, the proportion of the tumor stage, and the need for surgical resection. T-cell lymphoma rarely occurs in the ileocecal region and present with complications, such as obstructions requiring immediate surgical intervention.<sup>[6,14]</sup> The treatment for primary malignant lymphomas in general requires a multidisciplinary approach, combining surgery and chemotherapy.

In conclusion, colonic MALT lymphoma is a rare entity presenting as intussusception. Though definitive treatment has not yet been established, combination of surgery and chemotherapy is thought to be superior to any other treatment combination.

## REFERENCES

1. Isaacson P, Wright DH. Malignant lymphoma of mucosa-associated lymphoid tissue. A distinctive type of B-cell lymphoma. *Cancer* 1983;52:1410-6.
2. Howell JM, Auer-Grzesiak I, Zhang J, Andrews CN, Stewart D, Urbanski SJ. Increasing incidence rates, distribution and histological characteristics of primary gastrointestinal non-Hodgkin lymphoma in a North American population. *Can J Gastroenterol* 2012;26:452-6.
3. Ghimire P, Wu YG, L Primary gastrointestinal lymphoma *World J Gastroenterol* 2011;17:697-707.
4. Azar T, Berger DL. Adult intussusception. *Ann Surg* 1997;226:134-8.
5. Psyrri A, Papageorgiou S, Economopoulos T. Primary extranodal lymphomas of stomach: Clinical presentation, diagnostic pitfalls and management. *Ann Oncol* 2008;19:1992-9.
6. Kim SJ, Choi CW, Mun YC, Oh SY, Kang HJ, Lee SI, *et al.* Multicenter retrospective analysis of 581 patients with primary intestinal non-hodgkin lymphoma from the Consortium for Improving Survival of Lymphoma (CISL). *BMC Cancer* 2011;11:321.
7. Baïrey O, Ruchlemer R, Shoïberg O. Non Hodgkins lymphoma of colon. *IMAJ* 2006;8:832-6.
8. Eisen LK, Cunningham JD, Aufses AH Jr. Intussusception in adults: Institutional review. *J Am Coll Surg* 1999;188:390-5.
9. Li B, Shi YK, He XH, Zou SM, Zhou SY, Dong M, *et al.* Primary non-Hodgkin lymphomas in the small and large intestine: Clinicopathological characteristics and management of 40 patients. *Int J Hematol* 2008;87:375-81.
10. Toyomasu Y, Tsutsumi S, Yamaguchi S, Mochiki E, Asao T, Kuwano H. Laparoscopy-assisted ileocecal resection for mucosa-associated lymphoid tissue lymphoma of the appendix: Case report. *Hepatogastroenterology* 2009;56:1078-81.
11. Ahlawat S, Kanber Y, Charabaty-Pishvaian A, Ozdemirli M, Cohen P, Benjamin S, *et al.* Primary mucosa-associated lymphoid tissue (MALT) lymphoma occurring in the rectum: A case report and review of the literature. *South Med J* 2006;99:1378-84.
12. Montalban C, Santon A, Boixeda D, Bellas C. Regression of gastric high grade mucosa associated lymphoid tissue (MALT) lymphoma after *Helicobacter pylori* eradication. *Gut* 2001;49:584-7.
13. Domizio P, Owen RA, Shepherd NA, Talbot IC, Norton AJ. Primary lymphoma of the small intestine. A clinicopathological study of 119 cases. *Am J Surg Pathol* 1993;17:429-42.
14. Zinzani PL, Magagnoli M, Pagliani G, Bendandi M, Gherlinzoni F, Merla E, *et al.* Primary intestinal lymphoma: Clinical and therapeutic features of 32 patients. *Haematologica* 1997;82:305-8.

**How to cite this article:** Jayabackthan L, Murgi SB, Graham S, Kini RG. A rare case of primary lymphoma of the caecum presenting as intussusception. *J Lab Physicians* 2013;5:118-20.

**Source of Support:** Nil. **Conflict of Interest:** None declared.

### Dispatch and return notification by E-mail

The journal now sends email notification to its members on dispatch of a print issue. The notification is sent to those members who have provided their email address to the association/journal office. The email alerts you about an outdated address and return of issue due to incomplete/incorrect address.

If you wish to receive such email notification, please send your email along with the membership number and full mailing address to the editorial office by email.