



Spectrum of Virulence Factors in Clinical Isolates of *Staphylococcus aureus* and Prevalence of SCCmec Types in Methicillin-Resistant *Staphylococcus aureus* in a Tertiary Care Center

Rhea Michelle J. Khodabux¹ Shanthi Mariappan¹ Uma Sekar¹

¹Department of Microbiology, Sri Ramachandra Institute of Higher Education and Research (SRIHER), Porur, Chennai, Tamil Nadu, India

J Lab Physicians 2023;15:450–461.

Address for correspondence Shanthi Mariappan, MBBS, MD, PhD, Professor, Department of Microbiology, Sri Ramachandra Institute of Higher Education and Research (SRIHER), Porur, Chennai 600 116, Tamil Nadu, India (e-mail: shanthi.m@sriramachandra.edu.in).

Abstract

Background Methicillin-resistant *Staphylococcus aureus* (MRSA) is a widely recognized multidrug-resistant bacteria presenting a major therapeutic challenge to clinicians. *Staphylococcus aureus* possesses a number of pathogenicity factors that attribute to the severity of infections. This study was undertaken to investigate the common virulence genes in clinical isolates of *Staphylococcus aureus*, determine their antimicrobial susceptibility profile, and to characterize the staphylococcal cassette chromosome mec (SCCmec) types among MRSA in a tertiary care center.

Materials and Methods A total of 133 clinical isolates were included in this study. Susceptibility to various antibiotics was determined by disc diffusion method. Methicillin resistance was screened using cefoxitin disc; *mecA* and *mecC* genes were detected using polymerase chain reaction (PCR). PCR was done to detect 12 virulence factors such as *hla*, *hly*, *fnbA*, *fnbB*, *sea*, *seb*, *sec*, *icaA*, *clfA*, *tst*, *pvl*, and *eta*. SCCmec typing was done by multiplex PCR.

Results Of the 133 clinical isolates, 54 (40.6%) were MRSA. The most common virulence gene detected was *hly* (61.6%), *hla* (39%), and *fnbA* (37%). SCCmec type I was the most predominant. Mortality rate of 6.7% was observed among patients with staphylococcal infections. Univariate analysis of mortality associated virulence genes did not reveal any significant association between virulence genes and mortality.

Conclusion The distribution of virulence genes is similar in both MRSA and methicillin-sensitive *Staphylococcus aureus*. MRSA belongs to the SCCmec types I to IV. Possession of multiple virulence factors and multidrug resistance profile makes *Staphylococcus aureus* a formidable pathogen in clinical settings.

Keywords

- ▶ methicillin-resistant *Staphylococcus aureus*
- ▶ MRSA
- ▶ *Staphylococcus aureus*
- ▶ virulence genes
- ▶ SCCmec typing

received
August 15, 2022
accepted after revision
January 3, 2023
article published online
March 27, 2023

DOI <https://doi.org/10.1055/s-0043-1764483>.
ISSN 0974-2727.

© 2023. The Indian Association of Laboratory Physicians. All rights reserved.

This is an open access article published by Thieme under the terms of the Creative Commons Attribution-NonDerivative-NonCommercial-License, permitting copying and reproduction so long as the original work is given appropriate credit. Contents may not be used for commercial purposes, or adapted, remixed, transformed or built upon. (<https://creativecommons.org/licenses/by-nc-nd/4.0/>)

Thieme Medical and Scientific Publishers Pvt. Ltd., A-12, 2nd Floor, Sector 2, Noida-201301 UP, India

Introduction

Methicillin-resistant *Staphylococcus aureus* (MRSA) is a public health concern on a global scale and a widely recognized multidrug-resistant bacteria.¹ In many countries, 25 to 50% of all staphylococcal infections are attributable to MRSA.² Though it is an essential component of the human microbiota, it is associated with a multitude of infections including skin and soft tissue, bacteremia, pneumonia, osteomyelitis, endocarditis, and toxin-mediated diseases.³

Most MRSA possesses the *mecA*-encoded, low affinity, penicillin binding protein A movable genetic element found in the chromosome of MRSA called the staphylococcal cassette chromosome *mec* (SCCmec) and harbors the *mecA* and/or *mecC* genes, mediating methicillin resistance.^{4,5}

Staphylococcus aureus possesses virulence determinants genes that help the organism survive and colonize or interfere with the host defense system. They include various toxins like leucocidins, enterotoxins, exfoliative toxins, exotoxins, and hemolysis and surface components like capsules, peptidoglycans, teichoic acid, and protein A, in addition to enzymes like esterase, lipases, fatty acid modifying enzymes, proteases, hydrolytic enzymes, and catalases.¹ Biofilm production is another crucial factor contributing to therapeutic resistance and pathogenicity. Multidrug resistance and the combination of the above pathogenic factors attribute to severity of infections.³ The surface proteins of *Staphylococcus aureus* aids in adhesion and colonization. The cellular proteins, proteases, and toxins prevent phagocytosis and blunt the immune response.⁶

Enterotoxin genes, *sea*, *seb*, and *sec*, are associated with food poisoning. The serine protease enzyme such as exfoliative toxin encoded by the gene *eta* is related to blister development, cell- to-cell adhesion, and keratinocyte loss. The *tst* gene encodes for toxic shock syndrome toxin, an exoprotein and a member of the pyrogenic toxin super antigen family, and impairs the immunological response of the cells, ultimately causing cell death.⁶

Staphylococcus aureus produces exotoxins⁷ that are cytolytic which form β -barrel pores in the plasma membrane, leading to leakage of the cell contents and lysis cytolysins include α -hemolysin, β -hemolysin, γ -hemolysin, leukocidin, and Panton-Valentine leukocidin (PVL).⁸ The *hla* gene codes for the α -hemolysin that is lethal to human epithelial cells and a primary agent in skin infections. The beta-hemolysin, encoded by the *hlyB* gene, is a sphingomyelinase and is presumed to have a role in lung injury and pneumonia.⁹

Panton Valentine leukocidin (*pvl*) is a synergohymenotropic toxin that also causes pores in cell membranes. Although sepsis and necrotizing pneumonia have been documented in association with *pvl*-producing MRSA, most often they cause minor skin or soft tissue infections. *Pvl* is primarily encountered in community-associated MRSA and infrequently in-hospital isolates; thus, it is regarded as a marker for community-acquired strains. It exhibits affinity towards leukocytes.⁷

Staphylococcal scalded skin syndrome is linked to the, exfoliative toxins namely, ETA and ETB that are pyrogenic

exoproteins. The exfoliative toxins, ETA and ETB, are encoded by the *eta* and *etb* genes, respectively. Despite sharing the same biological functions, ETA and ETB have different immunological traits. The *eta* gene is considered to occur in higher frequency.¹⁰

The intercellular adhesion cluster, which contains the *ica* gene, aids in the formation of biofilm. The clumping factors, *clfA* and *clfB*, fibronectin-binding proteins A (*FnBA*) and B (*FnBB*), collagen binding protein, and staphylococcal protein A are typical members of microbial surface component recognizing adhesive matrix molecules and are critical for adherence.⁷ The *fnbA* and *fnbB* favor cell internalization and intercellular persistence leading to chronic infections.⁶ Clumping factor A (*ClfA*) is linked to the fibrinogen region causing bacterial or platelet aggregation in the blood.¹¹

Rich genetic diversity in the SCCmec element causes proliferation of virulence and antibiotic resistance determinants. Till date, 15 SCCmec types (I–XV) have been recognized, based on the combinations of five *mec* complexes (classes A, B, C1, C2, and E) and nine *ccr* gene complexes (types I–IX).¹² The variety of SCCmec types and virulence factors creates a reservoir for transmission of infections.

This study was undertaken to investigate the common virulence genes in clinical isolates of *Staphylococcus aureus*, determine their antimicrobial susceptibility profile, and to characterize the SCCmec types among MRSA in a tertiary-care teaching hospital.

Materials and Methods

Bacterial Isolates

The study was conducted in a 1,600-bed university teaching hospital in South India from 2019 to 2021. A total of 133 clinically significant, consecutive, nonrepetitive *Staphylococcus aureus* isolated from patients hospitalized for more than 48 hours were included in the study. Repetitive isolates from the same patients and isolates from outpatients were excluded from the study. The study protocol was approved by Institutional Ethics Committee (REF: IEC-NI/19/FEB/68/12).

The source of the isolates was exudates ($n = 105$), blood ($n = 18$), urine ($n = 7$), and respiratory specimens ($n = 3$). The significance of the study isolates was ascertained by correlating with Gram stain, significant growth in cultures, and the patient clinical history. The isolates were identified up to species level by standard biochemical tests and automated systems: VITEK2 GP-card (bioMerieux, Marcy l'Etoile, France) and MALDI-TOF MS (bioMerieux, Marcy l'Etoile, France).

Antimicrobial Susceptibility Testing

Antibiotic susceptibility testing was done by Kirby Bauer disc diffusion for different classes of antimicrobial agents such as ampicillin (10 μ g), cefuroxime (30 μ g), erythromycin (30 μ g), clindamycin (2 μ g), amikacin (30 μ g), ciprofloxacin (5 μ g), and linezolid (30 μ g). Methicillin resistance was detected by using cefoxitin (30 μ g) disc (Himedia, Mumbai, Maharashtra, India) as per Clinical and Laboratory Standards Institute (CLSI) guidelines (CLSI-M100-S29).¹³ Minimum inhibitory concentrations of linezolid (MicroExpress, Goa, India) teicoplanin and

vancomycin were determined by agar dilution method in accordance with CLSI guidelines.

Phenotypic Methods

Production of Biofilm: Microtiter Plate Method

Production of biofilm was determined by microtiter plate method using 96-well polystyrene microtiter plate in method described previously.¹⁴ The *Staphylococcus aureus* was classified as strong biofilm producers with OD of more than 0.240, moderate biofilm producers with optical density OD of 0.120 to 0.240, and nonbiofilm producers with OD of less than 0.120.

Molecular Methods

DNA Extraction

DNA extraction was performed by boiling-lysis method as described previously.¹⁵ Colonies of clinical strains were transferred to 1000 μ L of sterile distilled water. The samples were then boiled to prepare the DNA. It was centrifuged at 1,200rpm for 10 minutes. The supernatant was separated and stored. This was used as template for polymerase chain reactions (PCRs).

Polymerase Chain Reaction

All the isolates were subjected to molecular confirmation using the species specific *nuc* gene.¹⁶ *MecA* and *mecC* genes were amplified to detect methicillin resistance.^{17,18} Triplex, duplex, and simplex PCR were set up to detect the genes encoding virulence factors such as *icaA* (intracellular adhesin

protein), *hla* and *hly* (hemolysin toxin alpha and hemolysin toxin beta), *pvl* (Panton valentine toxin), *sea*, *seb* and *sec* (staphylococcal enterotoxin A, staphylococcal enterotoxin B, and staphylococcal enterotoxin c), *eta* (exfoliative toxin A), *clfA* (clumping factor), *tst* (toxic shock syndrome), *fmbA* and *fmbB* (fibronectin binding protein), with the following PCR conditions: Initial denaturation at 94°C for 5 minutes, denaturation at 94°C for 15 seconds, annealing: variable for 30 seconds, and extension at 72°C for 35 cycles for 30 seconds, Final extension at 72°C for 45 seconds. All the PCR reactions were carried out with a final volume of 25 μ L reaction. Each reaction contained 10pmol of each primer (Eurofins, Bangalore, India) and 23 μ L of master mix (Takara, India) and 2 μ L of template DNA.^{19–21}

Multiplex PCR was set up for SCCmec typing with the following PCR conditions: Initial denaturation at 94°C for 3 minutes, denaturation at 94°C for 30 seconds, annealing at 55°C for 30 seconds, extension at 72°C for 35 cycles for 1 minute, final extension at 72°C for 7 minutes. PCR was performed in a mixture of 30 μ L volume containing 15 μ L master mix (Takara, India); 0.5 μ L of each of β F1, α 3R1, ccrCF, and ccrCR primers (10pmol/ μ L; Eurofins, India); 0.3 μ L of each of 1272F1, 1272R1, 5RmecAF, 5R431R primers (10pmol/ μ L; Eurofins, India; and 2 μ L template DNA. The final volume was adjusted to 30 μ L by adding 9.8 μ L sterile ultrapure water (Takara, India).²²

The amplicons were separated in a 2% agarose gel containing ethidium bromide (**Fig. 1**). The primers used are described in **Table 1**. Previously, characterized strains were used as positive controls. Sterile Mili Q water was used as negative controls.

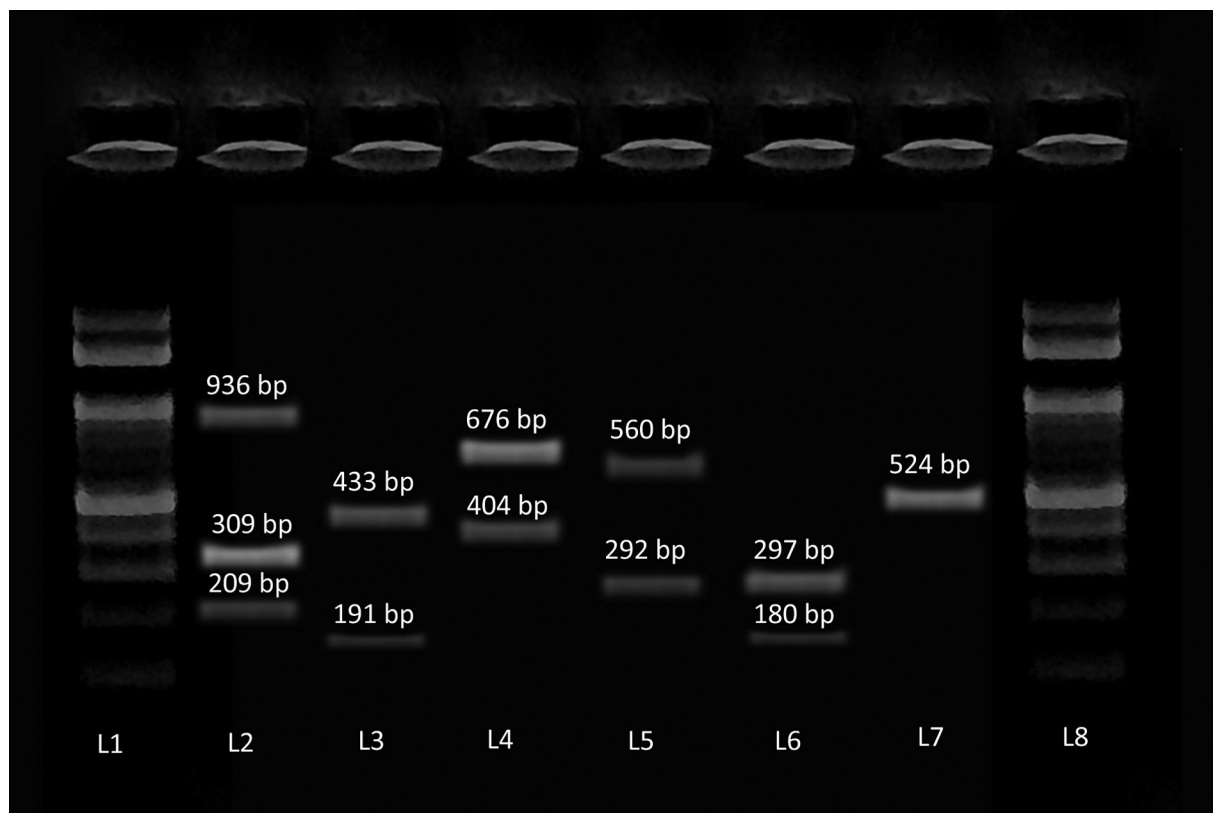


Fig. 1 Image of gel electrophoresis of polymerase chain reaction for the detection of virulence genes of *Staphylococcus aureus*. DNA ladder (100bp) (L1 and L8), *icaA*, *hla* and *hly* (L2), *pvl* and *fmbA* (L3), *eta* and *seb* (L4), *sea* and *clfA* (L5), *sec* and *tst* (L6), *fmbB* (L7).

Table 1 Primers and PCR conditions used for resistance genes, virulence genes, and SCCmec typing of clinical isolates of *Staphylococcus aureus*

	Gene	Primer sequence	Temperature	Amplicon	Reference	
Methicillin resistance	nuc	F- TCGCTTGCTATGATTGTGG R- GCCAATGTTCTACCATAGC	50	359	15	
	mecA	F- GTAGAAATGACTGAACGTCCGATAA R- CCAATCCACATTGTTCCGGTCTAA	55	310	16	
	mecC	F- GAAAAAAGGCTTAGAACGCCTC R- GAAGATCTTTCCGTTTTCCAGC	54	132	17	
Virulence genes	icaA	F- TCAGACACTTGCTGGCGCAGTC R- TCACGATTCTCTCCCTCTCTGCCATT	56	936	18	
	hlyB	F- GTGCACTTACTGACAATAGTGC R- GTTGATGAGTAGCTACCTTCAGT		309		19
	hlyA	F- CTGATTACTATCCAAGAAATTCGATTG R- CTTCCAGCCTACTTTTTTATCAGT		209		
	eta	F- CGCTGCGGACATTCCAACATGG R- TACATGCCCGCCACTTGCTTGT	60	676	404	
	seb	F- ATTCTATTAAGGACACTAAGTTAGGGA R- ATCCCGTTTCATAAGGCGAGT				
	sea	F- GAAAAAAGTCTGAATTGCAGGGAACA R- CAAATAAATCGTAATTAACCGAAGGTTG	56	676	292	
	clfA	F- ATTGGCGTGCTTCAGTGCT R- CGTTTCTCCGTAGTTGCATTG				
	sec	F- GTAAAGTTACAGGTGGCAAACCTTG R- CATATCATACCAAAAAGTATTGCCGT	57	297	180	
	tst	F- TTCACTATTTGTA AAAAGTGCAGACCCACT R- TACTAATGAATTTTTTATCGTAAGCCCTT				
	fnbB	F- GTAACAGCTAATGGTCGAATTGATACT R- CAAGTTCGATAGGAGTACTATGTTC	58	524	20	
	pvl	F- ATCATTAGGTAAAATGTCTGGACATGATCC R- GCATCAASTGTATTGGATAGCAAAGC	58	433		
	fnbA	F- GATACAAACCCAGGTGGTGG R- TGTGCTTGACCATGYTCTTC				
SCCmec typing	β	F- ATTGCCTTGATAATAGCCYTCT R- TAAAGGCATCAATGCACAAACACT	55	937	21	
	a3					
	ccrC	F- CGTCTATTACAAGATGTTAAGGATAAT R- CCTTTATAGACTGGATTATTCAAAATAT		518		
	1272	F- GCCACTCATAACATATGGAA R- CATCCGAGTGAAACCCAAA		415		
	1272					
	5RmecA	F- TATACCAAACCCGACAACACTAC R- CGGCTACAGTGATAACATCC		359		
	5R431					

Abbreviations: PCR, polymerase chain reaction; SCCmec, staphylococcal cassette chromosome mec.

The obtained sequences were submitted in the GenBank database under the following accession numbers: ON500665, ON500666, ON500667, ON500668, ON500669, ON500670, ON500671, ON500672, OP125544, OP125545.

Statistical Analysis

Statistical analysis was done by using SPSS software 16.0 version (IBM Corp., New York, United States). Chi-squared test and Fisher's exact test was used to compare the distribution of virulence genes among MRSA and methicillin-

sensitive *Staphylococcus aureus* (MSSA) isolates. Univariate analysis was done to find the significance between virulence factors and mortality. The *p*-value of less than 0.05 was considered as statistically significant.

Results

Antimicrobial Susceptibility Pattern

The resistance exhibited to various classes of antimicrobials is as follows: ampicillin 73.6% (98/133), cefuroxime 40.6%

(54/133), cefoxitin 40.6% (54/133), erythromycin 48.1% (64/133), clindamycin 27% (36/133), and ciprofloxacin 61.6% (82/133). All isolates were susceptible to linezolid, vancomycin and teicoplanin.

Phenotypic Methods

Biofilm Production by Microtiter Plate Method

Forty percent (53/133) of the study isolates were biofilm producers by microtiter plate method that included 7.5% (4/53) strong biofilm producers and 92.5% (49/53) moderate biofilm producers. The remaining 60% (80/133) were non-biofilm producers.

Molecular Methods

Among the 133 isolates, the *nuc* gene was present in all the isolates, confirming the identification as *Staphylococcus aureus*.

Detection of Methicillin Resistance

Of the 133 study isolates, 54 (40.6%) were MRSA and carried the *mecA* gene. *MecC* gene was not detected in any of the study isolates.

Virulence Genes Profile

In this study, 81.3% (108/133) isolates of *Staphylococcus aureus* carried one or more virulence genes. The most common virulence gene detected in this study was *hly* 61.6% (82/133) followed by *hla* 39% (52/133) and *fnbA* 37.5% (50/133). The detection of the virulence gene among the total study isolates and their distribution among MRSA and MSSA is depicted in ►Table 2. Twenty-five (18.7%) study isolates did not harbor any of the genes that were looked for in this study.

In 15.7% (17/108) of the isolates, only a single virulence gene was detected. The virulence genes that occurred singly were *sea* (4), *hla* (3), *hly* (3), *clfA* (2), *icaA* (2), *seb* (1), *sec* (1), and *tst* (1).

Of the 108 isolates that carried the virulence genes, 91 (84.3%) carried more than one gene in various combinations. Some combinations of virulence genes were found in single isolates only. These combinations are depicted in ►Tables 3 and 4, respectively.

Among the exudative isolate, the most common gene was *hly* followed by *hla* and *fnbA*. The *pvl* gene was detected only in exudative isolates. The most common gene among the blood isolates was *hly*. The respiratory isolates carried the *hly* and *icaA* gene. ►Table 5 depicts the distribution of the virulence gene of *Staphylococcus aureus* in various clinical specimens.

SCCmec Typing

By SCCmec typing, among the 54 MRSA isolates, 64.8% (35/54) were typable. Nineteen (35.1%) isolates were nontypable. Of the 35 typable MRSA, 26 belonged to SCCmec type I, 7 to type IV, and one belonged to type II. One isolate belonged to both the type I and III. The antimicrobial susceptibility profile of the SCCmec types is depicted in ►Table 6.

Statistical Analysis

A mortality rate of 6.7% (9/133) was observed among the patients with staphylococcal infection that included six MSSA and three MRSA. All the three MRSA belonged to SCCmec type I. The virulence gene profile, underlying disease condition in these patients and the antibiotics susceptibility profile, is given in ►Table 7. Univariate analysis of mortality associated virulence gene did not reveal any significant association between mortality and the presence virulence genes (►Table 8).

Table 2 Distribution of virulence factors among clinical *Staphylococcus aureus* isolates

Virulence genes	Staphylococcus aureus (n = 133)	Percentage	MRSA (n = 54)	Percentage	MSSA (n = 79)	Percentage	p-Value
<i>icaA</i>	46	34.5	18	33.3	28	35.2	0.80166
<i>hla</i>	52	39	23	42.5	29	36.7	0.49468
<i>hly</i>	82	61.6	32	59.2	50	63.2	0.63862
<i>pvl</i>	9	6.7	5	9.2	4	5	0.4847
<i>fnbA</i>	50	37.5	21	38.8	29	36.7	0.79879
<i>fnbB</i>	20	15	6	11.1	14	17.7	0.29491
<i>sea</i>	28	21	10	18.5	18	22.7	0.55340
<i>seb</i>	19	14.2	6	11.1	13	16.4	0.38703
<i>sec</i>	10	7.5	4	7.4	6	7.5	0.96787
<i>clfA</i>	20	15	9	16.6	11	13.9	0.66388
<i>eta</i>	9	6.7	3	5.5	6	7.5	0.7381
<i>tst</i>	14	10.5	6	11.1	8	10.1	0.85582

Abbreviations: MRSA, methicillin-resistant *Staphylococcus aureus*; MSSA, methicillin-sensitive *Staphylococcus aureus*.

Table 3 Virulence gene combinations and their frequency of occurrence

Virulence genes	Number of isolates (n = 48)	MRSA (18)	MSSA (30)
<i>icaA, hla, hlb, fnbB</i>	3 (6.25%)	1	2
<i>hla, hlb, fnbA, sea</i>	3 (6.25%)	1	2
<i>hlb, eta</i>	3 (6.25%)	1	2
<i>sec, tst</i>	3 (6.25%)	1	2
<i>hla, fnbA</i>	2 (4.1%)	2	0
<i>hla, hlb</i>	2 (4.1%)	0	2
<i>hla, hlb, fnbA</i>	2 (4.1%)	0	2
<i>hla, hlb, fnbA, seb</i>	2 (4.1%)	1	1
<i>hla, hlb, sea</i>	2 (4.1%)	1	1
<i>hla, hlb, sea, seb</i>	2 (4.1%)	1	1
<i>hlb, fnbA</i>	2 (4.1%)	2	0
<i>hlb, fnbB</i>	2 (4.1%)	0	2
<i>hlb, tst</i>	2 (4.1%)	0	2
<i>icaA, hla, hlb</i>	2 (4.1%)	1	1
<i>icaA, hla, hlb, fnbA, clfA, fnbB</i>	2 (4.1%)	0	2
<i>icaA, hla, hlb, fnbA, sea, clfA, seb</i>	2 (4.1%)	1	1
<i>icaA, hla, hlb, fnbA, tst</i>	2 (4.1%)	1	1
<i>icaA, hla, hlb, fnbA</i>	2 (4.1%)	1	1
<i>icaA, hlb</i>	2 (4.1%)	1	1
<i>icaA, hlb, fnbA, sec</i>	2 (4.1%)	1	1
<i>icaA, hlb, fnbB</i>	2 (4.1%)	1	1
<i>sea, seb</i>	2 (4.1%)	0	2

Abbreviations: MRSA, methicillin-resistant *Staphylococcus aureus*; MSSA, methicillin-sensitive *Staphylococcus aureus*.

Discussion

There has been an increase in mortality and morbidity due to *Staphylococcus aureus* infections, both in the community and in health care settings. The pathogenicity of *Staphylococcus aureus* is due to the presence of various virulence factors that undermine the immune system and promote their survival and persistence.

Table 4 Virulence gene combinations in single isolates

Virulence genes in single isolates (n = 43)	MRSA (18)	MSSA (25)
<i>fnbA, sea, fnbB</i>	0	1
<i>hla, clfA</i>	0	1
<i>hla, hlb, fnbA, clfA</i>	1	0
<i>hla, hlb, fnbA, clfA, eta</i>	0	1

(Continued)

Table 4 (Continued)

Virulence genes in single isolates (n = 43)	MRSA (18)	MSSA (25)
<i>hla, hlb, fnbA, eta</i>	1	0
<i>hla, hlb, sea, clfA</i>	0	1
<i>hla, hlb, fnbB</i>	0	1
<i>hla, hlb, sea, tst</i>	1	0
<i>hla, sea, sec</i>	0	1
<i>hlb, fnbA, clfA</i>	0	1
<i>hlb, fnbA, fnbB</i>	0	1
<i>hlb, fnbA, seb</i>	1	0
<i>hlb, pvl, fnbA, seb</i>	0	1
<i>hlb, pvl, fnbB, clfA, eta, seb</i>	0	1
<i>hlb, sec</i>	1	0
<i>hlb, sec, tst</i>	1	0
<i>icaA, hla, fnbA</i>	0	1
<i>icaA, hla, fnbB</i>	0	1
<i>icaA, hla, hlb, clfA, sea</i>	1	0
<i>icaA, hla, hlb, fnbA, clfA, fnbB, eta</i>	1	0
<i>icaA, hla, hlb, fnbA, clfA, seb</i>	1	0
<i>icaA, hla, hlb, fnbA, fnbB, eta</i>	0	1
<i>icaA, hla, hlb, fnbA, sea, fnbB</i>	1	0
<i>icaA, hla, hlb, fnbA, seb</i>	0	1
<i>icaA, hla, hlb, fnbA, sea, seb</i>	0	1
<i>icaA, hla, hlb, pvl, fnbA, clfA</i>	1	0
<i>icaA, hla, hlb, pvl, fnbA, fnbB</i>	0	1
<i>icaA, hla, hlb, pvl, fnbA, sea, clfA</i>	1	0
<i>icaA, hla, hlb, pvl, fnbA, sec, tst</i>	0	1
<i>icaA, hla, hlb, pvl, fnbA, tst</i>	1	0
<i>icaA, hla, hlb, pvl, sea, seb</i>	0	1
<i>icaA, hla, hlb, sea</i>	1	0
<i>icaA, hla, hlb, sea, seb</i>	0	1
<i>icaA, hlb, clfA, fnbB</i>	0	1
<i>icaA, hlb, fnbA, clfA, seb</i>	0	1
<i>icaA, hlb, fnbA, sea, seb</i>	0	1
<i>icaA, hlb, fnbA, seb</i>	1	0
<i>icaA, hlb, sea</i>	1	0
<i>icaA, hlb, tst</i>	0	1
<i>icaA, hla, hlb, pvl, fnbA</i>	1	0
<i>icaA, seb</i>	0	1
<i>pvl, fnbA, fnbB</i>	1	0
<i>sea, fnbB, eta</i>	0	1

Abbreviations: MRSA, methicillin-resistant *Staphylococcus aureus*; MSSA, methicillin-sensitive *Staphylococcus aureus*.

Table 5 Distribution of the virulence genes in clinical specimens

Virulence genes	Exudates (105)	Blood (18)	Urine (7)	Respiratory (3)
<i>icaA</i>	37 (35.2%)	5 (27.7%)	1 (14.2%)	3 (100%)
<i>hly</i>	68 (64.7%)	7 (38.8%)	4 (57.1%)	3 (100%)
<i>hla</i>	42 (40%)	5 (27.7%)	2 (28.5%)	2 (66.7%)
<i>pvl</i>	9 (8.5%)	0	0	0
<i>fnbA</i>	43 (40.9%)	4 (22.2%)	2 (28.5%)	1 (33.4%)
<i>eta</i>	8 (7.6%)	1 (5.5%)	0	0
<i>seb</i>	15 (14.2%)	2 (11.1%)	1 (14.2%)	0
<i>sea</i>	21 (20%)	3 (16.6%)	4 (57.1%)	0
<i>clfA</i>	17 (16.1%)	2 (11.1%)	1 (14.2%)	0
<i>sec</i>	8 (7.6%)	2 (11.1%)	0	0
<i>tst</i>	11 (10.4%)	2 (11.1%)	0	1 (33.4%)
<i>fnbB</i>	14 (13.3%)	4 (22.2%)	1 (14.2%)	1 (33.4%)

Table 6 Distribution of SCCmec types and their susceptibility profile

Antibiotics	SCCmec Type I (n = 26)	SCCmec type II (n = 1)	SCCmec type IV (n = 7)	SCCmec type I and III (n = 1)	Non typable (n = 19)
Erythromycin	8 (30.7%)	0	3 (42.8%)	0	11 (57.8%)
Clindamycin	15 (57.6%)	0	4 (57.1%)	1 (100%)	16 (84.2%)
Ciprofloxacin	5 (19.2%)	0	4 (57.1%)	0	6 (31.5%)
Gentamycin	7 (26.9%)	1 (100%)	4 (57.1%)	0	12 (63.1%)
Teicoplanin	26 (100%)	1 (100%)	7 (100%)	1 (100%)	19 (100%)
Linezolid	26 (100%)	1 (100%)	7 (100%)	1 (100%)	19 (100%)
Vancomycin	26 (100%)	1 (100%)	7 (100%)	1 (100%)	19 (100%)

Abbreviation: SCCmec, staphylococcal cassette chromosome mec.

Table 7 Mortality-associated virulence genes

Specimens	Virulence genes	Diagnosis	MRSA/MSSA	Antibiotic susceptibility profile
Exudate	<i>icaA, hla, hly, fnbA, sea, seb</i>	Sepsis, DM, multiple organ failure	MSSA	Clindamycin Cloxacillin Cefuroxime Linezolid Vancomycin Teicoplanin
Blood	<i>sec, tst</i>	Pneumonia, Sepsis	MSSA	Ampicillin Cloxacillin Erythromycin Clindamycin Ciprofloxacin Gentamycin Cefuroxime Linezolid Vancomycin Teicoplanin
Blood	<i>hla, clfA</i>	CKD, DM, CRBSI	MSSA	Cloxacillin Erythromycin Clindamycin Ciprofloxacin

Table 7 (Continued)

Specimens	Virulence genes	Diagnosis	MRSA/MSSA	Antibiotic susceptibility profile
				Cefuroxime Linezolid Vancomycin Teicoplanin
Blood	<i>hly, fnbB</i>	Diabetic foot, Sepsis	MSSA	Ampicillin Cloxacillin Cefuroxime Linezolid Vancomycin Teicoplanin
Exudate	<i>icaA, hly, fnbA, clfA, seb</i>	Sepsis, CKD, DM	MSSA	Ampicillin Cefuroxime Cloxacillin Erythromycin Clindamycin Gentamycin Linezolid Vancomycin Teicoplanin
Blood	<i>icaA, hly, fnbA, sea, seb</i>	Urosepsis. DM	MSSA	Cloxacillin Clindamycin Ciprofloxacin Gentamycin Cefuroxime Linezolid Vancomycin Teicoplanin
Blood	<i>icaA, hly, fnbB</i>	Diabetic foot ulcer, Sepsis	MRSA (SCCmec type I)	Erythromycin Clindamycin Ciprofloxacin Gentamycin Linezolid Vancomycin Teicoplanin
Exudate	None	CKD, Diabetic cellulitis, Sepsis	MRSA (SCCmec type I)	Linezolid Vancomycin Teicoplanin
Blood	<i>icaA, hly, hly, sea</i>	Sepsis, AKI, DM, CAD	MRSA (SCCmec type I)	Erythromycin Clindamycin Ciprofloxacin Linezolid Vancomycin Teicoplanin

Abbreviations: AKI, acute kidney injury; CAD, coronary artery disease; CKD, chronic kidney disease; CRBSI, catheter-related bloodstream infection; DM, diabetes mellitus; MRSA, methicillin-resistant *Staphylococcus aureus*; MSSA, methicillin-sensitive *Staphylococcus aureus*; SCCmec, staphylococcal cassette chromosome mec.

Of the 133 study isolates, 54 (40.6%) isolates were MRSA. The prevalence of MRSA in a recent multicentric study conducted in India ranged from 32% to 80%.²³ According to the Antimicrobial Resistance Surveillance network (ICMR), the prevalence of MRSA in the Indian population ranged from 21% to 45%.²⁴ A study conducted in North India over a period of 3 years reported that MRSA increased from 28% in 2017 to 35.1% in 2019 with overall prevalence being 33.7%.²⁵ The prevalence of MRSA infection was 37.34% according to a recent meta-analysis report from South India.²⁶ In Asia-Pacific region, MRSA accounts for up to 50% of *Staphylococcus aureus*

bloodstream infections. In North Europe, South Europe, Australia, and the United States, prevalence of MRSA was less than 5%, 25% to 50%, 20% to 33%, and 53%, respectively.²⁷

In this study, virulence genes in both MRSA and MSSA were investigated. Presence of one or more virulence genes was observed in 81.3% (108/133) of the study isolates. In both staphylococcal biotypes, various combinations of virulence genes were present. According to few studies, some genes are known to occur more frequently in each of the biotypes.²⁸ Twenty-five (18.7%) isolates did not harbor any of the genes that were looked for in this study.

Table 8 Univariate analysis of virulence factors and mortality

Virulence genes	Deceased (n = 9)	Survivors (n = 124)	Odd's ratio 95% confidence interval	p-Value
<i>icaA</i>			2.5305 (0.6449–9.9256)	0.1831
Present	5	41		
Absent	4	83		
<i>hla</i>			1.2667 (0.3239–4.9525)	0.7340
Present	4	48		
Absent	5	76		
<i>hlb</i>			1.2632 (0.3016–5.2903)	0.7492
Present	6	76		
Absent	3	48		
<i>pvl</i>			0.6399 (0.0345–11.8620)	0.7644
Present	0	9		
Absent	9	115		
<i>fnbA</i>			0.7872 (0.1878–3.3000)	0.7436
Present	3	47		
Absent	6	77		
<i>eta</i>			0.6399 (0.0345–11.8620)	0.7644
Present	0	9		
Absent	9	115		
<i>seb</i>			3.3750 (0.7667–14.8566)	0.1077
Present	3	16		
Absent	6	108		
<i>sea</i>			1.9800 (0.4627–8.4723)	0.3570
Present	3	25		
Absent	6	99		
<i>clfA</i>			1.6825 (0.3234–8.7524)	0.5363
Present	2	18		
Absent	7	106		
<i>sec</i>			1.5972 (0.1793–14.2258)	0.6747
Present	1	9		
Absent	8	115		
<i>tst</i>			1.0673 (0.1235–9.2255)	0.9528
Present	1	13		
Absent	8	111		
<i>fnbB</i>			1.6825 (0.3234–8.7524)	0.5363
Present	2	18		
Absent	7	106		

The genes encoding for *fnbA* and *fnbB* were encountered in 37.5% and 15% isolates, respectively, in this study. *fnbA* was the most common that is in concordance with studies from China and Palestine.^{20,29} However, in both these reports, prevalence of *fnbA* was higher than this study with 78.2% and 62.5%, respectively. Occurrence of *fnbB* was 29% in both the above reports.

In the current investigation, 15% of the isolates carried the *clfA* gene. There is a marked variation in the detection of *clfA* gene in clinical isolates of *Staphylococcus aureus*. In China, a study reported that all their study isolates carried the *clfA* gene, while a study from Brazil did not detect the *clfA* gene in any isolate.^{3,20} In Indian study, 58.7% MRSA harbored the *clfA* gene.³⁰

Polysaccharide intercellular adhesion, which is required for biofilm development, is encoded for and controlled by the intercellular adhesion (*icaADCB*) operon. Among the *ica* genes, *icaA* has been shown to be crucial for *Staphylococcus aureus* for the development of biofilms. The N-acetylglucosaminyltransferase enzyme, which generates N-acetylglucosamine oligomers from UDP-N-acetylglucosamine, is encoded by the *icaA* gene. In this study, *icaA* was detected in 34.5% (46/133) isolates, of which majority were from exudative 82.6% (38/46) isolates followed by blood 10.8% (5/46). Biofilm production was observed by microtiter plate in 39.8% (53/133) of the study isolates. Of these biofilm producers, *icaA* was present in 19 isolates only. The remaining 34 biofilm producers lacked *icaA*, indicating the presence of other biofilm encoding genes namely, *icaB*, *icaC*, and *icaD*, that were not included in the study protocol. The detection of *icaA* gene in this study was lower when compared to a study from North India, wherein 52.3% harbored the *icaA* gene.³¹ Studies from Brazil, China, and Iran reported 100%, 89.9%, and 60.3% of *icaA*, respectively. Hence, *icaA* may not be the sole gene associated with biofilm formation.^{32,33}

The *hla* and *hly* genes that encode for cytolytic toxins such as alpha hemolysin and beta hemolysin in *Staphylococcus aureus* were the most common virulence genes in this study. Majority of the isolates (91.7%, 122/133) in the present investigation carried at least one of the hemolysin encoding gene, *hla* and/or *hly*. Eleven isolates did not harbor any of the hemolysins. *Hly* was more common than *hla* with their occurrence being 61.6% and 39%, respectively. In Iran also *hly* was the most common hemolysin observed, while in China *hla* was the most predominant.^{1,20}

In this study among the enterotoxin encoding genes, *sea* gene was the most common and was present in 21% of the isolates followed by *seb* and *sec* with occurrence of 14.2 and 7.5%, respectively. This result is in agreement with an investigation from Iran who reported 40.6%, 19.6% and 3% of the *sea*, *seb*, and *sec*.³⁴ Three studies from China observed that, among the enterotoxin genes, *seb* occurred more frequently.^{2,8,20} In Brazil, the investigators were able to detect *sea* (3.23%) and *seb* (54.84%) genes, respectively, but failed to detect the *sec* gene.³

In this study, the occurrence of *eta* and *tst* genes was 5.2 and 10.5%, respectively. Previous studies have found wide variation (0.2% to 94.4%) in the occurrence of the *eta* gene in *Staphylococcus aureus*.^{8,10,20,34–36} The prevalence of *tst* gene ranged between 5% and 34.6% in various published reports.^{8,32,35,37–40}

Pvl gene was detected in 6.7% (9/133) and all were from isolates recovered from wound exudates. The occurrence of *pvl* gene is low, when compared to that of countries in the West.⁴¹ Other investigators from other countries have found the prevalence of *pvl* gene to be ranging from 11.3% to 42.8%.^{2,3,8,20,36,40,42}

In this study, the adhesion (*fnaB*, *fnaC*, and *clfA*) and cytolytic (*hly* and *hla*) genes occurred more frequently particularly among isolates from exudative specimens. This suggests that adherence and cytotoxicity are majorly operative in skin and skin and soft tissue infections by *Staphylococcus aureus*

In this study, there is no significant difference in the distribution of virulence genes among MRSA and MSSA. This is in consensus to a study from Brazil that investigated 13 virulence genes in *Staphylococcus aureus* and found that there was no association between the presence of the virulence genes and methicillin resistance.⁴⁰ However, some studies have found significant variation. An investigator from Columbia inferred that the virulence genes were more diverse and frequent in MSSA than in MRSA (83 vs. 73%).⁴³ On the contrary, in Nigeria, a study compared the distribution of eight virulence genes among MRSA and MSSA and found that there was a significant association between MRSA and the presence of two virulence genes, *eta* and *icaA*.²⁸ Another study from Hungary found that, out of the 14 studied virulence genes, adhesins like *cna*, *sea*, *ica*, and *hly* were significantly more in MRSA, whereas superantigens like *tst*, *eta*, and *sec* were significantly abundant in MSSA.⁴⁴ The results of our study demonstrate that MSSA strains continue to be a significant cause of infection, indicating that MRSA has not completely replaced MSSA strains in clinical settings.

It has been frequently demonstrated that hospital-associated MRSA carried SCCmec types I, II, and III, while community-acquired MRSA belonged to types IV and V.²² This characteristic distribution of SCCmec types is becoming increasingly irrelevant as evidenced by the detection of different SCCmec types in hospital settings. According to many published reports both within India and other countries, the prevalence of different SCCmec types of MRSA strains varied considerably. In this study, of the 54 MRSA, 26 (48.1%) belonged to SCCmec type I followed by 12.9% (7/54) and 1.8% (1/54) to type IV and II, respectively. SCCmec type V was not found in any of the study isolates. One isolate was of dual type (type I and III). Presence of two SCCmec types in a single isolate has been described, in studies from Sikkim and Hyderabad (1.1–3.3%).^{45,46} Notably in Canada the majority of the isolates were of dual type (73.58%).⁴⁷ A proportion of our isolates were nontypeable ($n = 19/54$, 35.2%). In previous reports from India, the frequency of nontypeable MRSA was only 4% to 7.6%. The recent report from Hyderabad also found that 33.3% of the MRSA were not typeable in their study and this was attributed to the presence of clones endemic to the region and have suggested that large-scale multicentric investigation from the South Asian region would be required to gain further insights.⁴⁵ In this study, the antibiotic susceptibility profile also did not reveal any notable difference among the various SCCmec types investigated in this study (→ **Table 6**).

In this study, all the MRSA belonging to SCCmec types I, II, and IV carried different combinations of virulence genes investigated. This is in concordance with reports from India, Nigeria, Hungary, and Korea, wherein the MRSA isolates belonging to the different SCCmec types carried one or more virulence genes.^{6,28,44,48–50} In our study, one isolate that belonged to both the type I and III did not carry any of the virulence determinants. This may have harbored other virulence genes not included in the study protocol. In this study, of the nine *pvl* gene carriers and five were MRSA. Among

these five *pvl* positive MRSA, two each belonged to SCCmec type I and IV and one belonged to type II.

In this study, the mortality rate was 6.76% (9/133) among the patients with staphylococcal infection that include six MSSA and three MRSA. While eight isolates from these patients carried one or more virulence genes, one isolate did not carry any of the virulence gene investigated in the study. However, the mortality rate was lower than studies from United states and Cape Town which reported that the in-hospital mortality attributed to *Staphylococcus aureus* infection was 13% and 29%, respectively.^{51,52}

In this study, by univariate analysis, it was evident that none of the virulence genes had significant association with mortality. This was similar to the observation in a study from Hungary which reported that the number of virulence genes carried and the presence of specific virulence factors did not influence the outcome of infection even though they had a reported a high mortality rate of 35.3% among patients with staphylococcal infections.⁴⁴

The characterization of multiple virulence genes in clinical isolates and their correlation with clinical outcomes can be considered as the strength of this study. Such a type of study has not been undertaken in India and elsewhere. A case-controlled study with large number of clinical isolates can provide more insights into the association of virulence factors with morbidity and mortality.

Conclusions

The distribution of virulence genes is similar in both MRSA and MSSA. MRSA belongs to the SCCmec types I to IV. In view of the nontypeable MRSA encountered in the study, the other SCCmec types, VI to XV, have to be investigated. Though the prevalence of MRSA is 40.6%, the possession of multiple virulence factors and multidrug resistance profile makes MRSA a formidable pathogen in clinical settings.

Funding

This study was supported by the Founder chancellor Shri N. P.V. Ramasamy Udayar fellowship, provided by Sri Ramachandra Institute of Higher Education and Research.

Conflict of Interest

None declared.

References

- Degaim ZD, Shani WS, Hamim SS. Virulence factors of Methicillin Resistant *Staphylococcus aureus* (MRSA) isolated from burn patients. *Int J Curr Microbiol Appl Sci* 2015;4(07):898–906
- Liang Y, Tu C, Tan C, et al. Antimicrobial resistance, virulence genes profiling and molecular relatedness of methicillin-resistant *Staphylococcus aureus* strains isolated from hospitalized patients in Guangdong Province, China. *Infect Drug Resist* 2019; 12:447–459
- Souza SG, Campos GB, Oliveira PS, et al. Virulence factors in methicillin-resistant *Staphylococcus aureus* isolated from ICU units in Brazil. *Adv Microbiol* 2014;4:207–215
- Uehara Y. Current status of staphylococcal cassette chromosome *mec* (SCCmec). *Antibiotics (Basel)* 2022;11(01):86
- Sharma H, Smith D, Turner CE, et al. Clinical and molecular epidemiology of staphylococcal toxic shock syndrome in the United Kingdom. *Emerg Infect Dis* 2018;24(02):258–266
- Bhowmik D, Chetri S, Das BJ, Dhar Chanda D, Bhattacharjee A. Distribution of virulence genes and SCCmec types among methicillin-resistant *Staphylococcus aureus* of clinical and environmental origin: a study from community of Assam, India. *BMC Res Notes* 2021;14(01):58
- Bien J, Sokolova O, Bozko P. Characterization of virulence factors of *Staphylococcus aureus*: novel function of known virulence factors that are implicated in activation of airway epithelial proinflammatory response. *J Pathogens* 2011;2011:601905
- Wang X, Lin D, Huang Z, et al. Clonality, virulence genes, and antibiotic resistance of *Staphylococcus aureus* isolated from blood in Shandong, China. *BMC Microbiol* 2021;21(01):281
- Moraveji Z, Tabatabaei M, Shirzad Aski H, Khoshbakht R. Characterization of hemolysins of *Staphylococcus* strains isolated from human and bovine, southern Iran. *Majallah-i Tahqiqat-i Dampizishki-i Iran* 2014;15(04):326–330
- Koosha RZ, Fooladi AA, Hosseini HM, Aghdam EM. Prevalence of exfoliative toxin A and B genes in *Staphylococcus aureus* isolated from clinical specimens. *J Infect Public Health* 2014;7(03): 177–185
- McAdow M, Kim HK, Dedent AC, Hendrickx AP, Schneewind O, Missiakas DM. Preventing *Staphylococcus aureus* sepsis through the inhibition of its agglutination in blood. *PLoS Pathog* 2011;7 (10):e1002307
- Wang W, Hu Y, Baker M, et al. Novel SCCmec type XV (7A) and two pseudo-SCCmec variants in foodborne MRSA in China. *J Antimicrob Chemother* 2022;77(04):903–909
- Clinical and Laboratory Standards Institute. Performance Standards for Antimicrobial Susceptibility Testing. 29th ed. CLSI supplement. Wayne, PA: CLSI; 2019
- Abdel Halim RM, Kassem NN, Mahmoud BS. Detection of biofilm producing staphylococci among different clinical isolates and its relation to methicillin susceptibility. *Open Access Maced J Med Sci* 2018;6(08):1335–1341
- Murugesan S, Perumal N, Mahalingam SP, Dilliappan SK, Krishnan P. Analysis of antibiotic resistance genes and its associated SCCmec types among nasal carriage of methicillin resistant coagulase negative staphylococci from community settings, Chennai, Southern India. *J Clin Diagn Res* 2015;9(08):DC01–DC05
- Hirotsaki S, Sasaki T, Kuwahara-Arai K, Hiramatsu K. Rapid and accurate identification of human-associated staphylococci by use of multiplex PCR. *J Clin Microbiol* 2011;49(10):3627–3631
- Bhatt P, Tandel K, Singh A, Kumar M, Grover N, Sahni AK. Prevalence and molecular characterization of methicillin resistance among Coagulase-negative *Staphylococci* at a tertiary care center. *Med J Armed Forces India* 2016;72(Suppl 1):S54–S58
- Stegger M, Andersen PS, Kearns A, et al. Rapid detection, differentiation and typing of methicillin-resistant *Staphylococcus aureus* harbouring either *mecA* or the new *mecA* homologue *mecA* (LGA251). *Clin Microbiol Infect* 2012;18(04):395–400
- Campbell SJ, Deshmukh HS, Nelson CL, et al. Genotypic characteristics of *Staphylococcus aureus* isolates from a multinational trial of complicated skin and skin structure infections. *J Clin Microbiol* 2008;46(02):678–684
- Li X, Fang F, Zhao J, et al. Molecular characteristics and virulence gene profiles of *Staphylococcus aureus* causing bloodstream infection. *Braz J Infect Dis* 2018;22(06):487–494
- Arciola CR, Campoccia D, Gamberini S, Baldassarri L, Montanaro L. Prevalence of *cna*, *fnbA* and *fnbB* adhesin genes among *Staphylococcus aureus* isolates from orthopedic infections associated to different types of implant. *FEMS Microbiol Lett* 2005;246(01): 81–86
- Tabandeh M, Kaboosi H, Taghizadeh Armaki M, Pournajaf A, Peyravii Ghadikolaii F. New update on molecular diversity of clinical *Staphylococcus aureus* isolates in Iran: antimicrobial

- resistance, adhesion and virulence factors, biofilm formation and SCCmec typing. *Mol Biol Rep* 2022;49(04):3099–3111
- 23 Singhal T, Rodrigues C, Soman R, et al. Treatment of MRSA infections in India: clinical insights from a Delphi analysis. *Indian J Med Microbiol* 2022;40(01):35–45
 - 24 Rajkumar S, Sistla S, Manoharan M, et al. Prevalence and genetic mechanisms of antimicrobial resistance in *Staphylococcus* species: a multicentre report of the Indian Council of Medical Research antimicrobial resistance surveillance network. *Indian J Med Microbiol* 2017;35(01):53–60
 - 25 Lohan K, Sangwan J, Mane P, Lathwal S. Prevalence pattern of MRSA from a rural medical college of North India: a cause of concern. *J Family Med Prim Care* 2021;10(02):752–757
 - 26 Rathinam KK, Immanuel JMP. Prevalence of Methicillin-Resistant *Staphylococcus Aureus* (MRSA) in India: A Systematic Review and Meta-Analysis
 - 27 Lee AS, de Lencastre H, Garau J, et al. Methicillin-resistant *Staphylococcus aureus*. *Nat Rev Dis Primers* 2018;4:18033. Doi: 10.1038/nrdp.2018.33
 - 28 Alli OA, Ogbolu DO, Shittu AO, Okorie AN, Akinola JO, Daniel JB. Association of virulence genes with mecA gene in *Staphylococcus aureus* isolates from Tertiary Hospitals in Nigeria. *Indian J Pathol Microbiol* 2015;58(04):464–471
 - 29 Azmi K, Qrei W, Abdeen Z. Screening of genes encoding adhesion factors and biofilm production in methicillin resistant strains of *Staphylococcus aureus* isolated from Palestinian patients. *BMC Genomics* 2019;20(01):578
 - 30 Gowrishankar S, Kamaladevi A, Balamurugan K, Pandian SK. In vitro and in vivo biofilm characterization of methicillin-resistant *Staphylococcus aureus* from patients associated with pharyngitis infection. *BioMed Res Int* 2016;2016:1289157
 - 31 Malik N, Bisht D, Aggarwal J, Rawat A. Phenotypic detection of biofilm formation in clinical isolates of Methicillin-resistant *Staphylococcus aureus*. *Asian Journal of Pharmaceutical Research and Health Care* 2022;14(01):43–47
 - 32 Yu F, Li T, Huang X, et al. Virulence gene profiling and molecular characterization of hospital-acquired *Staphylococcus aureus* isolates associated with bloodstream infection. *Diagn Microbiol Infect Dis* 2012;74(04):363–368
 - 33 Mirzaee M, Najar Peerayeh S, Ghasemian AM. Detection of icaABCD genes and biofilm formation in clinical isolates of methicillin resistant *Staphylococcus aureus*. *Iran J Pathol* 2014;9(04):257–262
 - 34 Sabouni F, Mahmoudi S, Bahador A, et al. Virulence factors of *Staphylococcus aureus* isolates in an Iranian referral children's hospital. *Osong Public Health Res Perspect* 2014;5(02):96–100
 - 35 Hoseini Alfatemi SM, Motamedifar M, Hadi N, Sedigh Ebrahim Saraie H. Analysis of virulence genes among methicillin resistant *Staphylococcus aureus* (MRSA) strains. *Jundishapur J Microbiol* 2014;7(06):e10741
 - 36 Budzyńska A, Skowron K, Kaczmarek A, Wietlicka-Piszcz M, Gospodarek-Komkowska E. Virulence factor genes and antimicrobial susceptibility of *Staphylococcus aureus* strains isolated from blood and chronic wounds. *Toxins (Basel)* 2021;13(07):491
 - 37 Rossato AM, Reiter KC, d'Azevedo PA. Coexistence of virulence genes in methicillin-resistant *Staphylococcus aureus* clinical isolates. *Rev Soc Bras Med Trop* 2018;51(03):361–363
 - 38 Abbasi M, Baseri Salehi M, Bahador N, et al. Antibiotic resistance patterns and virulence determinants of different SCCmec and pulsotypes of *Staphylococcus aureus* isolated from a major hospital in Ilam, Iran. *Open Microbiol J* 2017;11:211–223
 - 39 Becker K, Friedrich AW, Lubritz G, Weilert M, Peters G, Von Eiff C. Prevalence of genes encoding pyrogenic toxin superantigens and exfoliative toxins among strains of *Staphylococcus aureus* isolated from blood and nasal specimens. *J Clin Microbiol* 2003;41(04):1434–1439
 - 40 Pereira-Franchi EPL, Barreira MRN, da Costa NSLM, et al. Molecular epidemiology of methicillin-resistant *Staphylococcus aureus* in the Brazilian primary health care system. *Trop Med Int Health* 2019;24(03):339–347
 - 41 Bratu S, Landman D, Gupta J, Trehan M, Panwar M, Quale J. A population-based study examining the emergence of community-associated methicillin-resistant *Staphylococcus aureus* USA300 in New York City. *Ann Clin Microbiol Antimicrob* 2006;5(01):29
 - 42 Chen X, Wu Z, Zhou Y, et al. Molecular and virulence characteristics of methicillin-resistant *Staphylococcus aureus* in burn patients. *Frontiers in Laboratory Medicine* 2017;1(01):43–47
 - 43 Jiménez JN, Ocampo AM, Vanegas JM, et al. Characterisation of virulence genes in methicillin susceptible and resistant *Staphylococcus aureus* isolates from a paediatric population in a university hospital of Medellín, Colombia. *Mem Inst Oswaldo Cruz* 2011;106(08):980–985
 - 44 Horváth A, Dobay O, Sahin-Tóth J, et al. Characterisation of antibiotic resistance, virulence, clonality and mortality in MRSA and MSSA bloodstream infections at a tertiary-level hospital in Hungary: a 6-year retrospective study. *Ann Clin Microbiol Antimicrob* 2020;19(01):17
 - 45 Bhutia KO, Singh T, Adhikari L, Biswas S. Molecular characterization of community- & hospital-acquired methicillin-resistant & methicillin-sensitive *Staphylococcus aureus* isolates in Sikkim. *Indian J Med Res* 2015;142(03):330–335
 - 46 Archana GJ, Sinha AY, Annamandeni M, et al. Molecular characterisation of methicillin-resistant *Staphylococcus aureus* isolated from patients at a tertiary care hospital in Hyderabad, South India. *Indian J Med Microbiol* 2020;38(02):183–191
 - 47 Zhang K, McClure JA, Elsayed S, Louie T, Conly JM. Novel multiplex PCR assay for characterization and concomitant subtyping of staphylococcal cassette chromosome mec types I to V in methicillin-resistant *Staphylococcus aureus*. *J Clin Microbiol* 2005;43(10):5026–5033
 - 48 Aggarwal S, Jena S, Panda S, et al. Antibiotic susceptibility, virulence pattern, and typing of *Staphylococcus aureus* strains isolated from variety of infections in India. *Front Microbiol* 2019;10:2763
 - 49 Abimannan N, Sumathi G, Krishnarajasekhar OR, Sinha B, Krishnan P. Clonal clusters and virulence factors of methicillin-resistant *Staphylococcus Aureus*: evidence for community-acquired methicillin-resistant *Staphylococcus Aureus* infiltration into hospital settings in Chennai, South India. *Indian J Med Microbiol* 2019;37(03):326–336
 - 50 Lim K, Lee G, Park M, et al. Genetic relationship between SCCmec types and virulence factors of methicillin-resistant *Staphylococcus aureus* clinical isolates in Korea. *J Exp Biomed Sci* 2010;16:75–78
 - 51 Inagaki K, Lucar J, Blackshear C, Hobbs CV. Methicillin-susceptible and methicillin-resistant *Staphylococcus aureus* bacteremia: nationwide estimates of 30-day readmission, in-hospital mortality, length of stay, and cost in the United States. *Clin Infect Dis* 2019;69(12):2112–2118
 - 52 Abdulgader SM, van Rijswijk A, Whitelaw A, Newton-Foot M. The association between pathogen factors and clinical outcomes in patients with *Staphylococcus aureus* bacteraemia in a tertiary hospital, Cape Town. *Int J Infect Dis* 2020;91:111–118