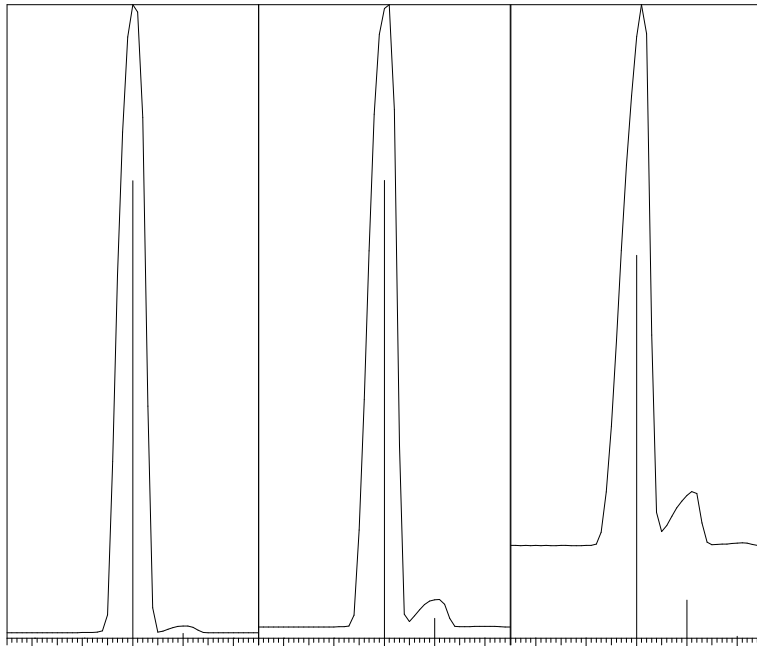


Text

Tuning Condition

Resolution Adjustment : YES
 FWHM of Peak Profile : 0.6
 Sensitivity Adjustment : YES
 Target Mass Adjustment : 264.00
 Mass Calibration : YES
 Mass Pattern Adjustment : NO



Tuning Result

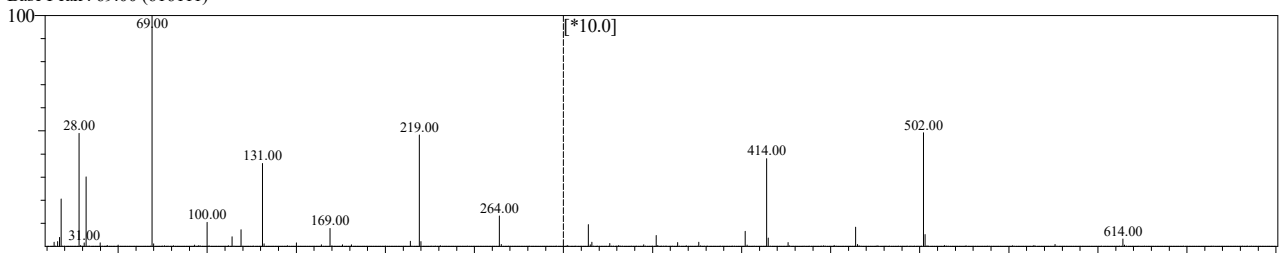
MS : GCMS-QP2020 NX
 Ionization Mode : EI
 Tuning Date : 08-01-2024 12:26:05
 Filament# : 1
 Lens1 : -1.0 V
 Lens2 : -30.0 V
 Lens3 : -0.9 V
 Lens4 : -47.0 V
 RF Gain : 4878
 RF Offset : 4937
 Pre-rod : -3.5 V
 Detector : 0.81 kV

 Ionization voltage : 70 V
 Emission current : 60 uA
 Main-rod : -3.5 V
 Conversion dynode: -10 kV

 IonSourceTemp : 201 °C
 Low Vacuum : 2.9e+000 Pa
 High Vacuum : 9.9e-005 Pa
 Interface Temp. : 100 °C
 Oven Temp. : 50 °C
 Carrier Gas : He
 Column Pressure : 28 kPa
 Column Flow : 0.7 mL/min
 Column Diameter : 0.25 mm
 Column Length : 30.0 m

m/z	Factor	Inten.	Ratio	FWHM
69.00	12.19	621650	100.00	0.59
219.00	25.62	295874	47.59	0.61
502.00	206.94	30623	4.93	0.61

Scan Range: 10.00 - 700.00 Scan Speed : 156
 Base Peak : 69.00 (616111)



m/z	Inten.	Ratio
69.00	616111	100.00
131.00	221262	35.91
219.00	297470	48.28
414.00	23407	3.80
502.00	30366	4.93
614.00	1967	0.32